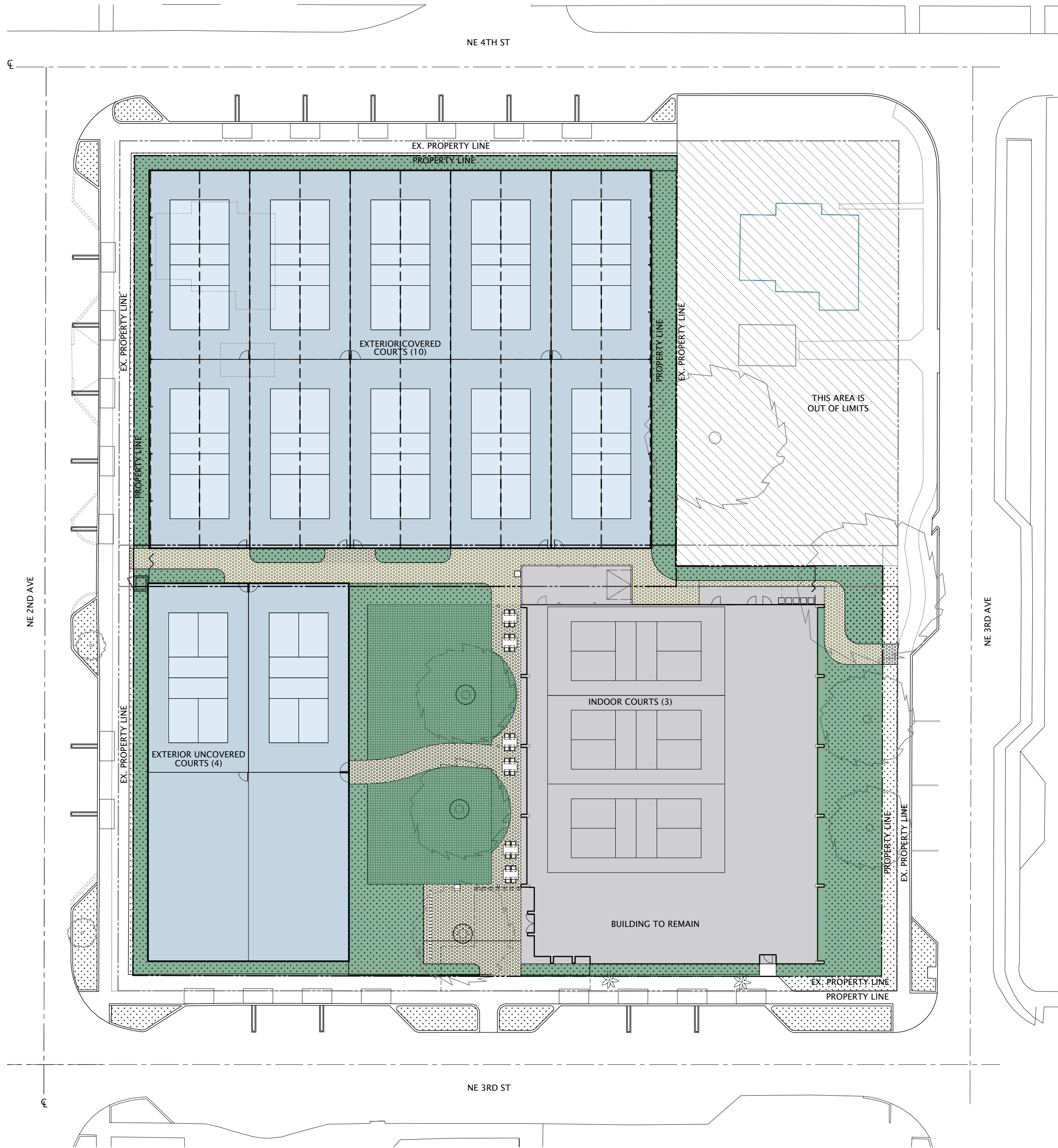


1



LEGEND		
	PAVERS ON SAND	IMPERVIOUS
	CONCRETE	IMPERVIOUS
	SOD	PERVIOUS
	ARTIFICIAL TURF	IMPERVIOUS
	EXTERIOR COURTS	IMPERVIOUS

PROJECT
POMPANO PICKLE
OT PROPERTY GROUP, LLC
217 NE 3rd Street
Pompano Beach, FL 33060

SHEET TITLE
**IMPERVIOUS
& PERVIOUS
DIAGRAM**

No.	DATE	REVISION
	070225	CITY REVISION
CHECKED	CORONEL ASSOCIATES	
DRAWN	CORONEL ASSOCIATES	
DATE	05.20.25	
PROJECT No.	24-117	

ARCHITECT OF RECORD
ROBERT A. LENAHA
ARCHITECT P. C.
AR98881
2121 N Ocean Boulevard 401 E
Boca Raton, FL 33431
Ofc. 845.639.7492
RLenahan@optonline.net

DIGITAL SIGNED

ALL DESIGN, DRAWINGS, REPORTS, SPECIFICATIONS, COMPUTER FILES, FIELD DATA, NOTES AND ANY OTHER DOCUMENTS PREPARED BY THE ENGINEER AS INSTRUMENTS OF SERVICE SHALL REMAIN THE PROPERTY OF THE ENGINEER AND IS NOT TO BE REPRODUCED, COPIED OR ALTERED IN WHOLE OR IN PART. IT IS ONLY TO BE USED FOR THE PROJECT AND SITE SPECIFICALLY IDENTIFIED HEREIN AND IS NOT TO BE USED ON ANY OTHER PROJECT. THE ENGINEER SHALL RETAIN ALL COMMON LAW COPYRIGHT AND OTHER RESERVED RIGHTS THERE-TO. WRITTEN DIMENSIONS

SHEET No.

SP-1.1